



fall winter
2016 — 2017
collection

 ballin

fall winter
2016 — 2017
collection

 ballin





kamet steel — nanda steel



parabat steel









cloud



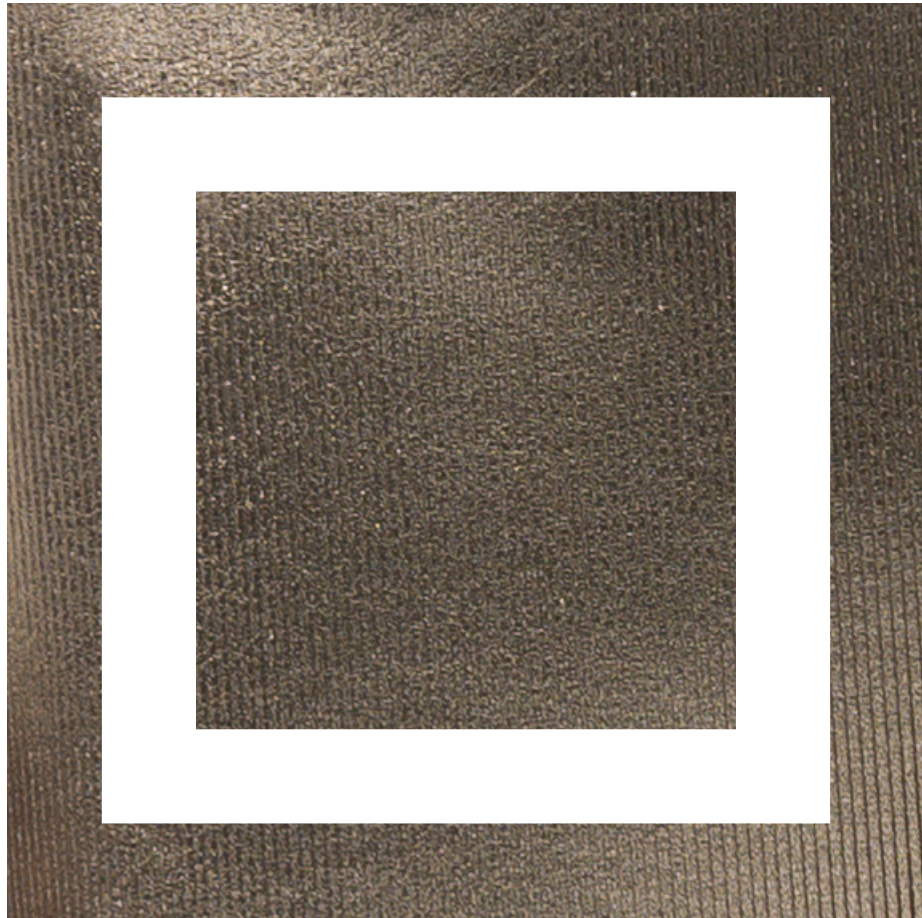
storm



araton



akriel — arael



snow



rain



lightning black



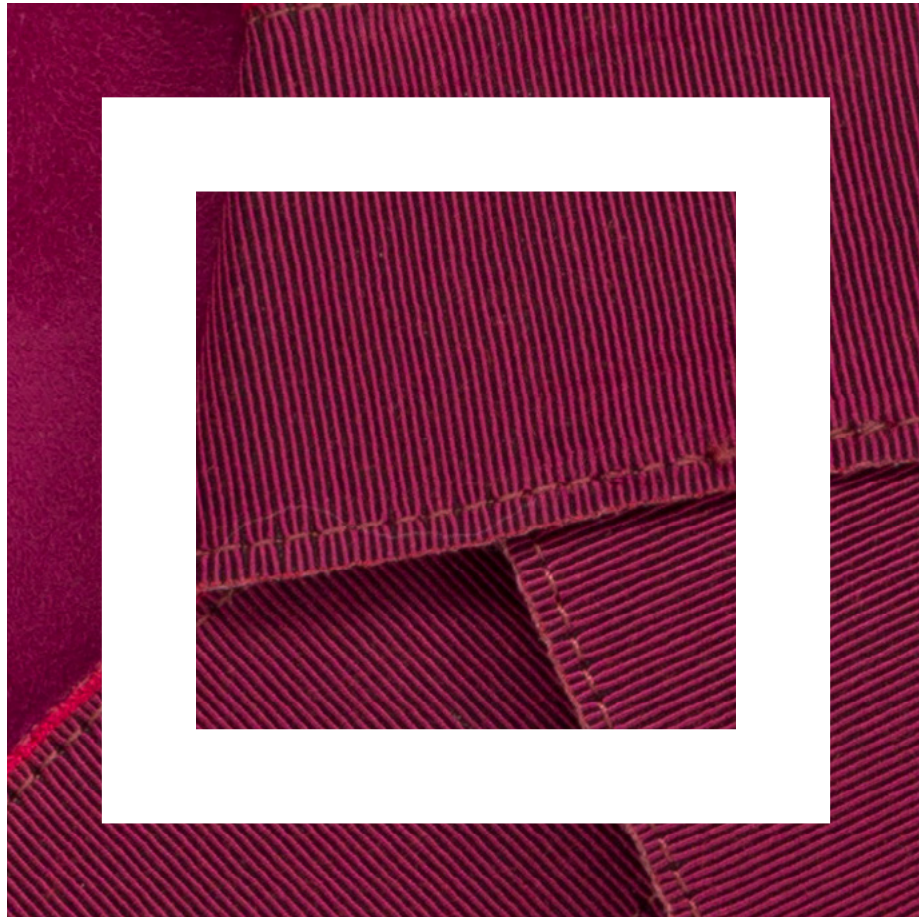
hurricane — lightning bronze



halo









coot



brant



boron black



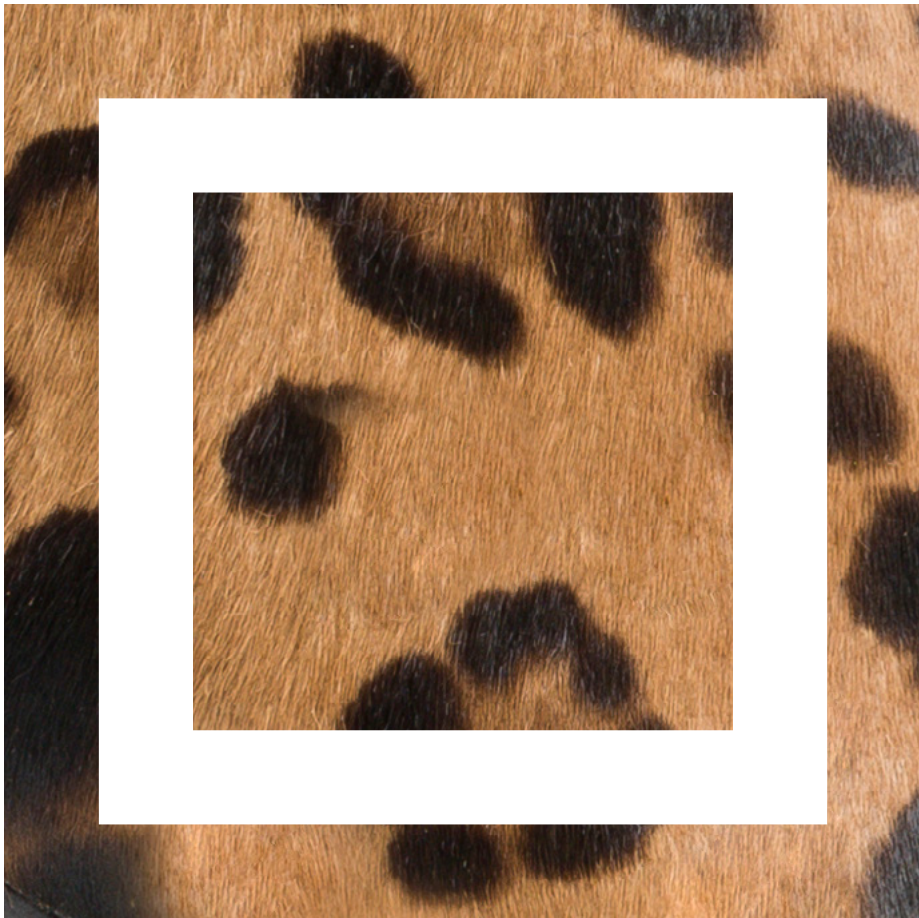
boron camel



brethor red — azrael red



bariel black — azrael black — ayil black





akagi leo



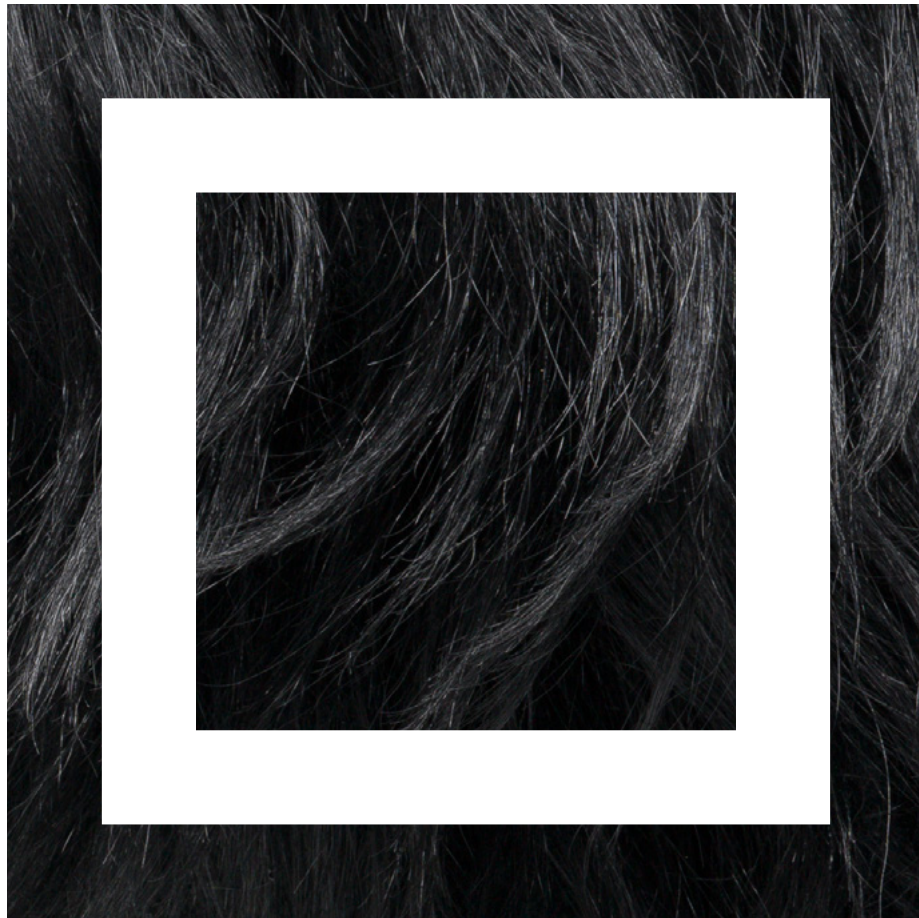
lithium — beryllium



bewick — tulum



huron black — huron leo



cyclone black



akutan python — akita phyton



aral



akagi camel



baikal camel — baikal black



krka black



krka moonstone — goreme



mayberry stone — amal stone — microamal stone



sunnydale wood — amal medium wood — microamal wood



cameal wood — cameal stone



amal medium eggshell — mayberry eggshell



sunnydale steel — amal steel



microamal grafite — microamal gold — microamal steel



snowdonia grafite — snowdonia gold — snowdonia steel



 ballin

Ufficio stampa:
Attila&Co.
via Guerrazzi, 1
20145 Milano — Italy

Alessia Cannella
alessia.cannella@attila.it
T 0039 02 34 970 752

Silvia Beretta
silvia.beretta@attila.it
T 0039 02 34 970 735

Ballin Project
Fiesso d'Artico, Venezia — Italy
T 0039 041 51 37 211

ballin-shoes.it



 ballin